



Drainage services overview

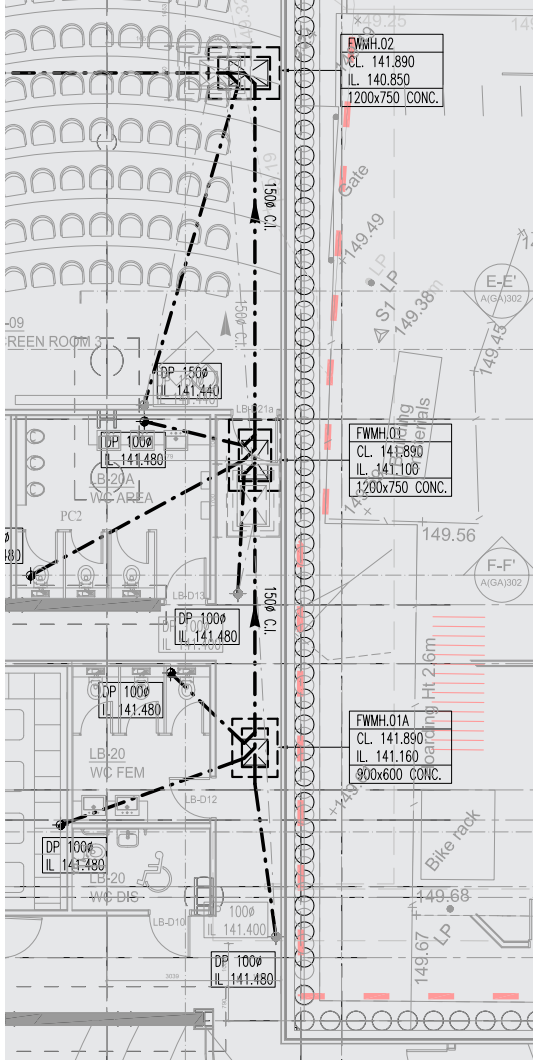
Delivering pumped and drainage solutions



Part of the Tricel Group of Companies

Edincare Drains provides a complete range of drainage services to the residential, commercial, hospitality and retail industries, and the public sector.





Project management

We will take responsibility for your drainage project from tender through to completion, regardless of the scope or scale.

A dedicated project manager will be assigned to supervise the scheme, and provide you with regular updates and expert advice.

We are practised at coordinating with other contractors when a project forms part of a wider programme of works.

Our CSCS-accredited field operatives are experienced at working alongside pump service engineers and other trades.

Service agreements

As with all systems, drainage networks benefit from regular maintenance to ensure they continue to function optimally.

Whether it's tankering and cleaning of pumping stations to coincide with pump servicing, or regular cleaning of drainage channels, gullies and silt traps, planned maintenance prevents costly and disruptive issues from arising.

Benefits include reduced rates on 24/7/365 emergency call outs and priority scheduling.

For complex sites and multi-property portfolios, we will create bespoke service agreements to address all requirements.

Contact our Service Team to discover the many ways an Edincare Drains Service Agreement can benefit you.



Tankering

Our fleet of combi-tankers can efficiently remove a range of wastewater types from pumping stations, septic tanks, cesspits, interceptors, road gullies, grease traps and other sumps and chambers.

Every combi-tanker carries more than 70 m of suction hose which can be supplemented by our support vehicle when longer runs are required.

All our combi-tankers are unbranded to provide a white label service to third-parties.

We provide a 24/7 emergency response to our service agreement customers. Our fleet is tracked so we can send an appropriate vehicle as quickly as possible.

We are an Environment Agency Registered Waste Carrier. We will provide waste transfer notes when the waste type mandates this, and also on request for other waste types.



Registered Waste Carrier

Business name	Edincare
Registration number	CBDU135964
Company number	02812959
Expiry date	10/10/2025



Pumping stations and interceptors

Edincare Drains engineers are experienced in supporting pump engineers on site. They can empty and clean wastewater pumping stations and interceptors to enable servicing and repairs to take place.

When servicing or refurbishing a pumping station it is not always possible to stop the supply of the waste entering the system. This makes such work more difficult or dangerous. A combi-tanker can intercept the waste upstream of the chamber to enable the work in safety and without rushing.

Our engineers are fully trained in the use of gas detection equipment, confined space entry procedures and all relevant health and safety legislation.

Septic tanks and treatment plants

We can empty and clean cesspools, septic tanks, or sewage treatment plants.

We recommend an Edincare Drains Service Agreement for schedule periodic visits, cost-savings and priority call-outs.

Gullies, slot drains and channels

We're all familiar with the localised flooding that results from blocked road gullies. Silt, plant material, litter and other debris can build up in a gully until it cannot drain freely.

We offer planned and reactive gully clearing to private housing estates, industrial estates, and retail parks. We can also empty gullies on public highways if requested.

Bypassing a public sewer

We were asked to provide day-and-night tanker support for five consecutive days to Thames Water while emergency repairs were made to a public foul sewer.

One of our 3000-gallon tankers attended a large residential development in North East London where a foul pumping station and two sewage attenuation chambers received waste from multiple blocks.

Due to its urgency, the work was scheduled at short notice. Thanks to our strength in depth, we were able to do so without compromising existing commitments.

Working in shifts, our engineers bypassed the main sewer until the civil engineering works were completed.



Repairs

We will select the most appropriate and cost-effective methods for repairing your drainage network regardless of its scale or complexity.

Patch repairs (CIPR)

Cure-in-place repairs (CIPR) are used to patch defects which include roots, minor pipe displacement, circumferential and longitudinal cracks, fractures and holes.

Pipe relining (CIPP)

Cure-in-place pipe (CIPP) is a method of repairing a long section of pipe without the need to excavate. It is more economical to line the whole pipe than use several patches.

Extensive remediation

We were contracted by a facilities management company to remediate the foul and surface water drainage networks of a business park in Wiltshire which were both in a poor state of repair.

Over 30 days, we employed a combination of high pressure jetting, tankering, confined space entry, CIPR, CIPP and excavations to repair all damaged pipes.

Additionally, we replaced and reinstated drainage channels and manhole covers.



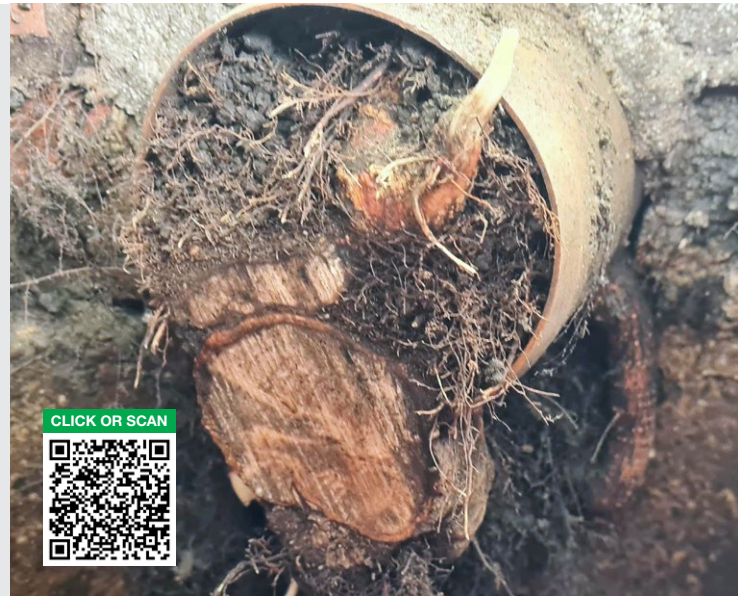
The root of the problem

We were asked to investigate a severe and persistent flooding problem in the playground of a primary school in Berkshire.

Using our CCTV equipment we discovered many sections of the drainage network were completely blocked by roots ranging from fine fibrous root mass to thick tap roots.

We cleared these using high-pressure water jets and sawing, all without excavation.

Following this, and with the site's drainage channels and silt traps also cleared, the drains flowed freely again.



Excavation

If there is no cost-effective alternative, we can excavate and replace section of pipes, gullies and manholes which have become damaged.

A CCTV camera survey will pinpoint the location of the damage so that the excavation is no larger than it need to be.

Tree root removal

Tree roots do not damage pipes but will exploit damaged or defective pipework. We employ several techniques including high pressure jetting and mechanical cutting to remove invasive roots. Unless the original defect is addressed, the problem will recur. Trees are often cut down needlessly when the best solution is a pipe patch or relining.



Drain maintenance

Jetting

We employ high-pressure water jetting to safely and effectively break down and clear blockages, clean chambers and maintain a healthy drainage network. We jet a wide range of pipework sizes including drains, rising mains and drainage channels. All our service vehicles have a jetting capability, 100m of hose and the ability to replenish water on site.

Electro-mechanical cleaning

Electro-mechanical pipe cleaning is a non-damaging alternative to jetting.

Our high-speed units come with a variety of attachments to suit many applications. As well as clearing soft blockages, they can safely and effectively remove hard materials such as limescale, corrosion and roots.



Cleaning cast iron pipework

We visited a residential development in East London to clean 40 metres of cast iron drainage pipework which was partially blocked by wet wipes, grease and scale.

Situated in the basement car park, the DN100 and DN150 cast iron pipework transports foul and surface water separately into the public drainage network.

First, we used high-speed electro-mechanical cleaning to core the pipes. This easily broke down the deposits without damaging the pipework.

We then employed high-pressure jetting to flush it through to the main sewer.

After cleaning the wastewater flow was unimpeded preventing further problems.

Investigation



Drainage CCTV

We provide drainage CCTV surveys to pinpoint blockages and defects so appropriate action can be taken. They can also be preventative, highlighting areas of concern before costly problems arise. We also offer pre- and post-construction drainage CCTV surveys.

Smoke testing

Smoke testing is an excellent method for locating leaks and the sources of foul odours.

Cable avoidance tool (CAT)

CAT scanning traces the route of subsurface infrastructure to aid in surveying and to prevent accidental damage during excavations.

Surveying a Fleet Street icon

Peterborough Court, the 11-storey former headquarters of the Daily Telegraph, is undergoing a complete refurbishment.

As part of this process, the building is being stripped back and all existing services assessed.

We were tasked with completely surveying the wastewater pipe system to allow the developer to repair or replace any defective pipework while it is accessible.

Over a 20 day period we employed drainage CCTV, dye testing and direct inspection to map the entire network.

Our engineers methodically labelled all pipework so the developer could easily follow the plans we generated.



Types of vehicle



Jetting and drainage CCTV van

450 litre jetting capacity with 100 m hose. The jetting tank can be replenished on site. Carries additional suction hose for tankers. Confined entry rescue and work equipment. Drainage CCTV equipment.



Combi-tanker, 440 gallon

440 gallon (2,000 litres) tankering capacity. 220 gallon jetting capacity with 100 m hose. The jetting tank can be replenished on site. Confined entry rescue and work equipment. Drainage CCTV equipment.



Combi-tanker, 2000 gallon

1,930 gallon (8,770 litres) tankering capacity. 220 gallon jetting capacity with 100 m hose. The jetting tank can be replenished on site. Confined entry rescue and work equipment.



Combi-tanker, 3000 gallon

2,700 gallon (12,275 litres) tankering capacity. 500 gallon jetting capacity with 100 m hose. The jetting tank can be replenished on site.



Enquiry form

Please complete and return to info@edincaredrains.com

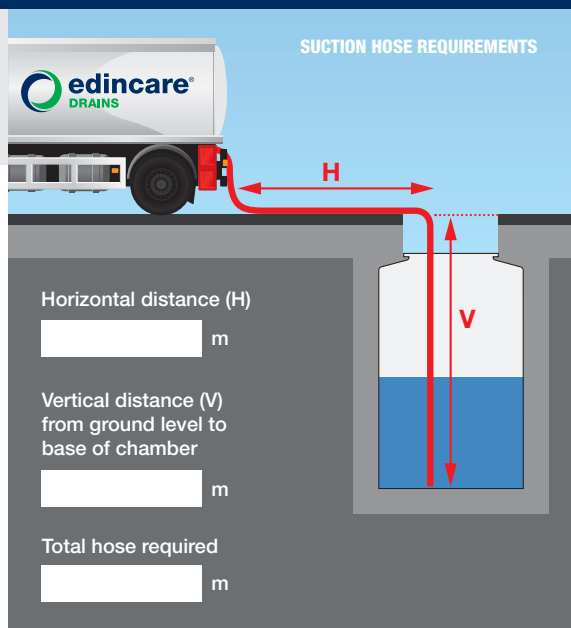
CUSTOMER DETAILS		SITE DETAILS	
Contact name	<input type="text"/>	Site contact name	<input type="text"/>
Company name	<input type="text"/>	Site company name	<input type="text"/>
Address	<input type="text"/>	Address	<input type="text"/>
Postcode	<input type="text"/>	Postcode	<input type="text"/>
Telephone	<input type="text"/>	Telephone	<input type="text"/>
Mobile	<input type="text"/>	Mobile	<input type="text"/>
Email	<input type="text"/>	Email	<input type="text"/>

SITE INFORMATION	
What time restrictions are there to site access? <input type="text"/> <input type="checkbox"/> None	What height or width restrictions are there on site? <input type="text"/> <input type="checkbox"/> None
What parking is available for the vehicle? <input type="text"/> <input type="checkbox"/> None	What water supply is available on site and where is it located? <input type="text"/> <input type="checkbox"/> None
What are the parking restrictions (yellow lines / red route)? <input type="text"/> <input type="checkbox"/> None	Access cover type / size? <input type="text"/>

TANKERING	
Wastewater type for removal	<input type="checkbox"/> Foul <input type="checkbox"/> Storm <input type="checkbox"/> Grease <input type="checkbox"/> Oil Other <input type="text"/>
Volume to be removed	<input type="text"/> <input type="checkbox"/> Litres <input type="checkbox"/> Gallons

JETTING	
Pipework diameter	<input type="text"/> mm
Pipework material	<input type="text"/>
Is access via a manhole?	<input type="checkbox"/> Yes <input type="checkbox"/> No
Length requiring jetting	<input type="text"/> m

DRAINAGE CCTV	
Pipework diameter	<input type="text"/> mm
Pipework material	<input type="text"/>
Length of CCTV survey	<input type="text"/> m



TANKERING • REPAIRS • MAINTENANCE • INVESTIGATIONS



Unit 8 Heron Business Park, Eastman Way, Hemel Hempstead, HP2 7FW

+44 (0)1442 211554 info@edincaredrains.com www.edincaredrains.com edincaredrains



Part of the Tricel Group of Companies

